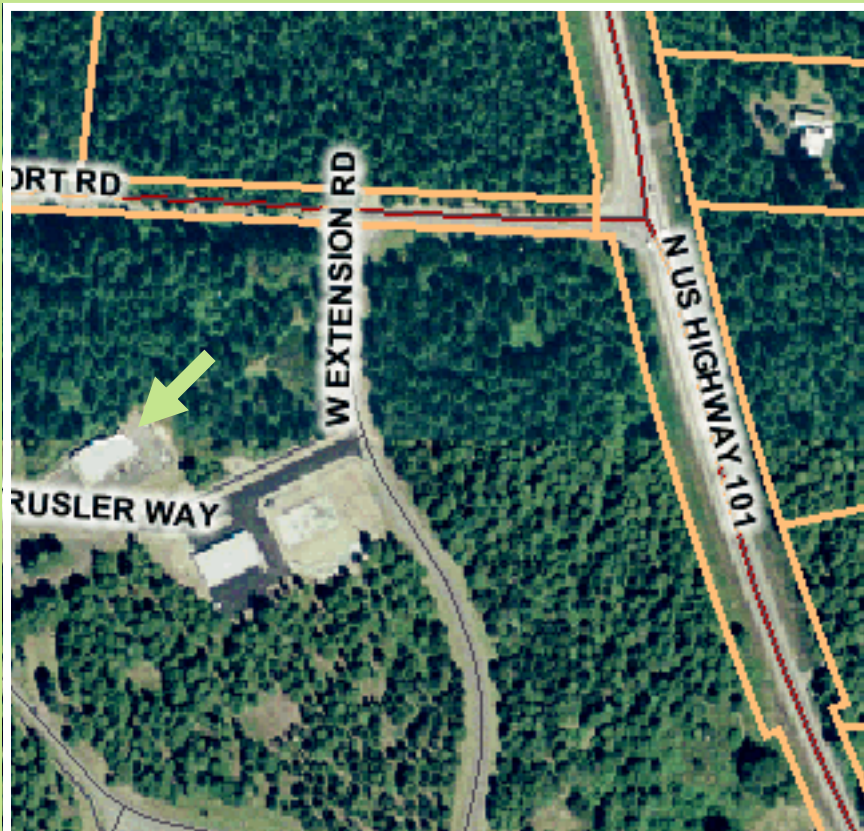


**AVAILABLE PROPERTY**



**240 HENRY TRUSLER WAY - PORT OF SHELTON**

- Building Size:** 5,000 SF
- Building Type:** Industrial
- Clear Height:** 20'
- Loading Docks:** N/A
- Bay Doors:** 2
- Power:** 3 phase/480 volts, 800 amps
- Fiber Optic:** OC-192 or greater
- Water:** Port Water System
- Sewer:** Individual System
- Sale/Lease:** Lease
- Parcel Size:** .5 Acres estimated
- Rail Access:** 2 miles away
- Natural Gas:** Available
- Zoning:** Industrial



**LISTING COMMENTS**

- Office Space
- Runway Access
- 9" Concrete Floor

Economic Development Council

of Mason County



P.O. Box 472  
2948 Olympic Hwy  
Shelton, WA 98584

**Matt Matayoshi**  
360.426.2276  
matt@masonedc.com

.35  
225 amps  
6" floor